

# HOUSE MANUAL



TARUEI DIRECTIVE NO.59

23/10/2025



Also available on online!



## 01 MESSAGE

- WELCOME MESSAGE ---- P3

## 02 WIFI

- WIFI PASSWORD ----- P4

## 03 GUIDELINE

- HOUSE RULES ----- P5

## 04 RUBBISH

- TRASH DISPOSAL ----- P6

## 05 KITCHEN

- PLATES & PANS ----- P7
- KETTLE  
& RICE COOKER ----- P8
- INDUCTION COOKER  
& MOBILE TABLE ---- P9

## 06 LIVING ROOM

- REMOTE CONTROL ---- P10
- SOFA BED ----- P11

## 07 JAPANESE ROOM

- ILLUMINATION ----- P12
- STORAGE AREA ----- P13
- LEISURES ----- P14

## 08 WASH ROOM

- BATHROOM SINK ----- P15
- LAUNDRY ----- P16
- BOILER ----- P17
- BATHROOM ----- P18
- TOILET ----- P19

## 09 2ND FLOOR

- ILLUMINATION ----- P20
- HEATER ----- P21
- FOLDING BED ----- P22

## 10 SURROUNDINGS

- STORES ----- P23
- RESTAURANT ----- P24
- DELIVERY ----- P25
- TOURIST SPOT ----- P26

## 11 OTHERS

- EVACUATION  
ROUTE MAP ----- P27
- FIRE EXTINGUISHER --- P28
- FLOOR PLAN ----- P29
- EMERGENCY  
CONTACTS ----- P30



01

MESSAGE

## WELCOME MESSAGE

小樽の隠れ家  
神居'n  
Otaru Retreat Come Inn

ようこそ  
WELCOME  
欢迎  
어서 오세요



# Welcome Message

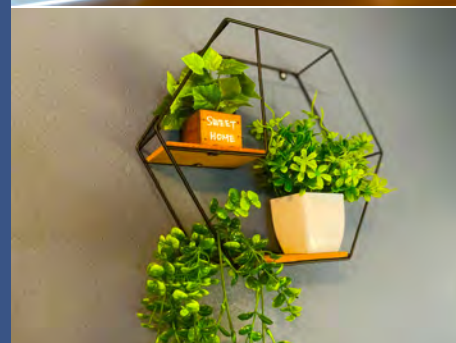
Thank you for choosing our house among the many available accommodations.

We hope you enjoy Otaru's beautiful scenery and rich history while staying comfortably with us.

If you have any questions or requests during your stay, please feel free to contact us.

We are dedicated to helping you create many wonderful memories with all our heart. Please relax and make yourself at home.

Sincerely, the Owner



# 02 WIFI WIFI PASSWORD



## Wi-Fi Name

SSID(2.4GHz) : **SPWH\_L13\_E95360**

SSID(5GHz) : **SPWH\_L13\_E95360\_5G**

## PASSWORD

**6nV24vLX**



**No Smoking**

All rooms in the building are non-smoking. If you wish to smoke, please do so outside.

**Electricity**

Please be careful not to overuse electricity, as this may cause the breaker to trip.

**Damage & Soiling**

If you make holes in the walls or cause damage to any furniture or appliances, you may be charged for repair or replacement costs.

**Noise**

Please be especially quiet after 10:00 PM. Refrain from loud conversations or playing music at high volumes that might disturb the neighbors.

**No Shoes Indoors**

No shoes are allowed inside. Please be sure to remove your shoes at the entrance.

**Maximum Occupancy**

Only registered guests are permitted to stay; additional guests are not allowed.

**No Entry**

The balcony and attic are off-limits. Unauthorized entry may result in a fine.

**No Removal of Items**

Taking any items from the premises is strictly prohibited. In some cases, the police may be notified.

**No Pets**

Pets are generally not allowed. If a pet is found, you may be asked to leave.

**Keys**

If you lose your key, you will be charged for the replacement cost.

**Locking**

When leaving the house, please ensure you lock the door.

**Lights Off**

When leaving the house, please ensure you turn off all lights.

# 04 GARBAGE TRASH DISPOSAL



Please cooperate by sorting your trash according to local regulations.





# 05 KITCHEN PLATES & PANS

小樽の隠れ家  
神居'n  
Otaru Retreat Come Inn

## PLATES, CUPS, & CUTLERY

Feel free to use!



## POTS & PANS

Feel free to use!



# 05 KITCHEN KETTLE & RICE COOKER

## KETTLE

Feel free to use!



### Usage Examples



Green Tea



Soup



Coffee



Cup Noodles

## RICE COOKER

Feel free to use!

### 3 Cups of Rice

Produces enough for about 6-7 bowls per use.



### Estimated Cooking Time

a Cup of Rice	3 Cups of Rice
approx. <b>15~25 min</b>	approx. <b>20~30 min</b>

※Once cooking is complete, it will automatically switch to keep-warm mode.



When finished using, please be sure to unplug it from the outlet!



# 05 KITCHEN INDUCTION COOKER & MOBILE TABLE

小樽の隠れ家 神居'n  
Otaru Retreat Come Inn

## INDUCTION COOKER

Feel free to use!



### Maximum Heat

- **Left/Right IH Heaters: 3.0 kW**  
(100W equivalent; 10-level heat adjustment)
- **Center Heater: 1.2 kW**  
(300W equivalent; 3-level heat adjustment)
- **Grill: Cooking mode 1.2 kW**  
("Manual" mode: 200W equivalent to 700W equivalent; 3-level heat adjustment)



**⚠ Please be careful not to forget to turn it off!**

## MOBILE TABLE

Feel free to use!



# 06 LIVING ROOM REMOTE CONTROL

小樽の隠れ家  
神居'n  
Otaru Retreat Come Inn

## USAGE OF EACH REMOTE CONTROL

Feel free to use!

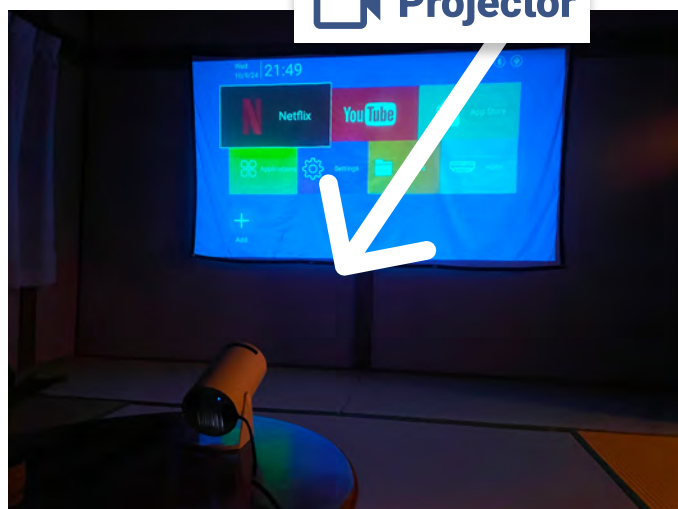


fire tv Fire Stick TV



Living Room Lighting

Projector





# 06 LIVING ROOM SOFA BED

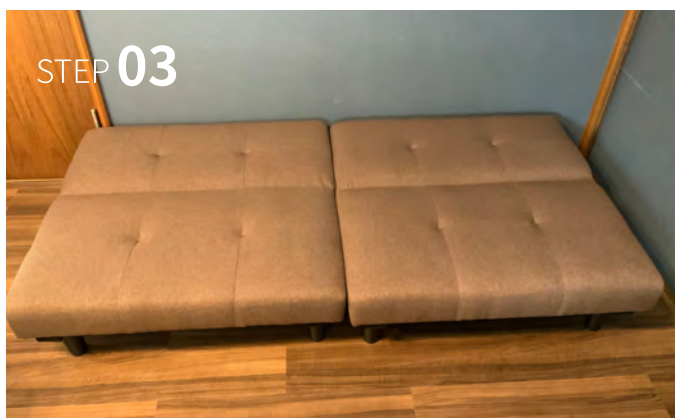
## HOW TO CONVERT THE SOFA BED INTO A BED



The sofa in front of the TV can also be used as a bed.



First, tilt it in the direction of the arrow, then tilt it in the opposite direction to lay it flat.



Flatten the bed.



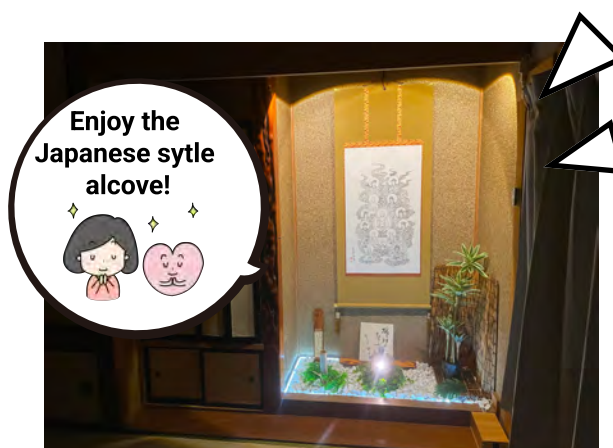
Place the pillow and the futon on it.

## VARIOUS WAYS TO USE IT

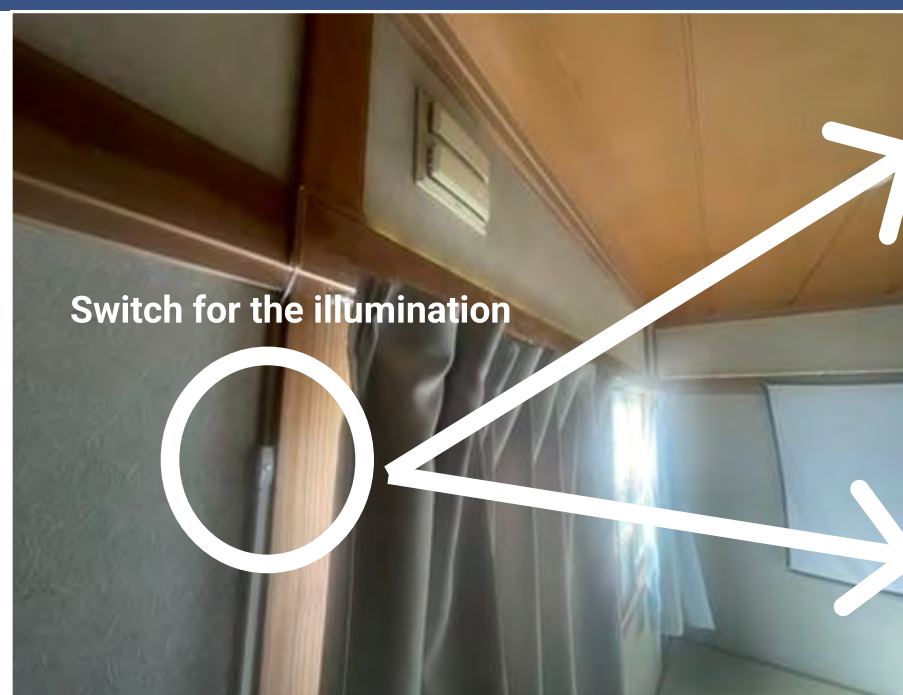


# 07 JAPANESE ROOM ILLUMINATION

## ILLUMINATION FOR THE DECORATIVE ALCOVE



## ILLUMINATION FOR THE JAPANESE-STYLE ROOM





# 07

JAPANESE ROOM

## STORAGE AREA

小樽の隠れ家  
神居'n  
Otaru Retreat Come Inn

**Up to 3 People Can Sleep on the Futons!**

### Items in the Closet

- 4 Futon Mattresses (1 spare)
- 4 Comforters (1 for the sofa bed)
- 4 Pillows (1 for the sofa bed)



**Futons are here.**



**Projector is here.**



There is an outlet inside.  
Please plug the projector's  
power cord into it.

When you're finished watching,  
unplug it from the outlet.

# 07 JAPANESE ROOM LEISURES

小樽の隠れ家  
神居'n  
Otaru Retreat Come Inn

## TARGET PRACTICE

Feel free to use!



## TARGET PRACTICE

- Target
- Ball x2



## GO

Feel free to use!



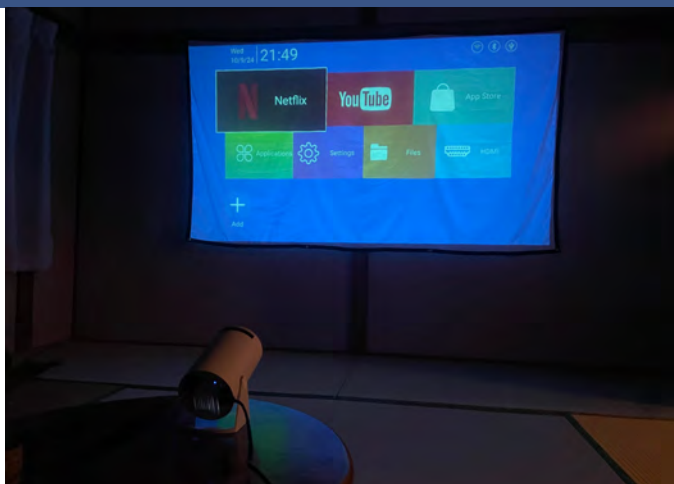
## GO

- Magnetic Go Board
- Magnetic Go Set (White and Black Pieces)



## PROJECTOR

Feel free to use!



## PROJECTOR

- NETFLIX
- HULU
- U-NEXT
- YouTube
- Amazon Prime
- etc





# 08 WASHROOM BATHROOM SINK

小樽の隠れ家  
神居'n  
Otaru Retreat Come Inn



## AMENITIES

Feel free to use!



Disposable Razor



Disposable Toothbrush



Hair Dryer

# 08 WASHROOM WASHING MACHINE

## WASHING MACHINE

Feel free to use!



Laundry Detergent



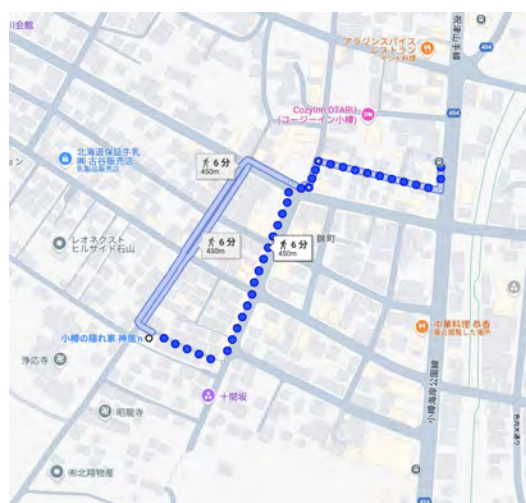
Washing Machine



After using the washing machine,  
please make sure to turn off the main water valve! !

## LAUNDROMAT

If you need to dry it quickly, there is  
a laundromat nearby.  
We recommend using it.  
Approximately 6-min walk from the  
property.





# 08 WASHROOM BOILER

## HOW TO USE THE WATER HEATER

If you want to use hot water, please make sure to turn on the boiler!

### Usage Example



Hot Water Temperature Guideline							
Display	1	2	3	4	5	6	7
Temperature Guideline	Lukewarm (approx. 25°)			Hot (approx. 80°)			

Settings: 1 to 7



This is the ON/OFF switch



If the power is off, please turn on it on, especially before using the shower !

# 08 WASHROOM BATHROOM

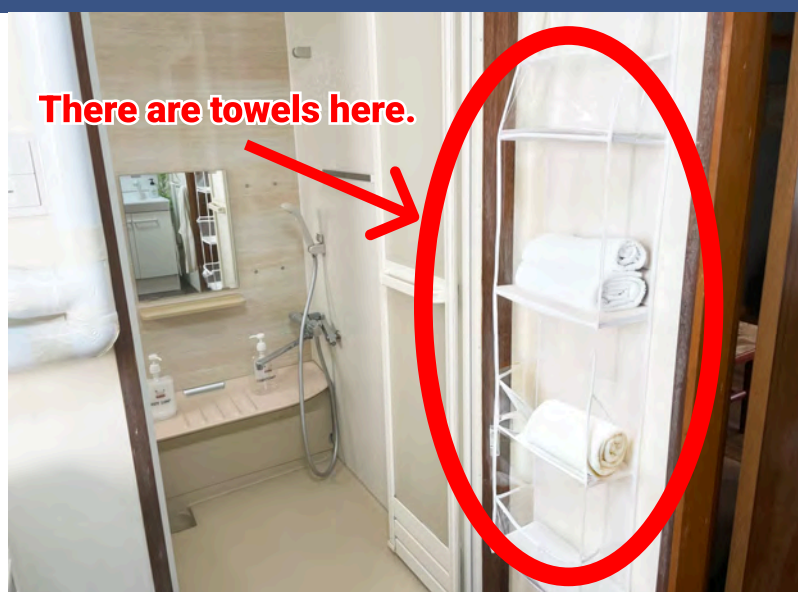


## BATH AMENITIES

Feel free to use!



Bath Towels × 8



- Shampoo
- Body Soap
- Conditioner



# 08 WASHROOM TOILET

## HOW TO USE THE TOILET

Please open the toilet seat lid.



Please do not sit down with the toilet seat lid closed.



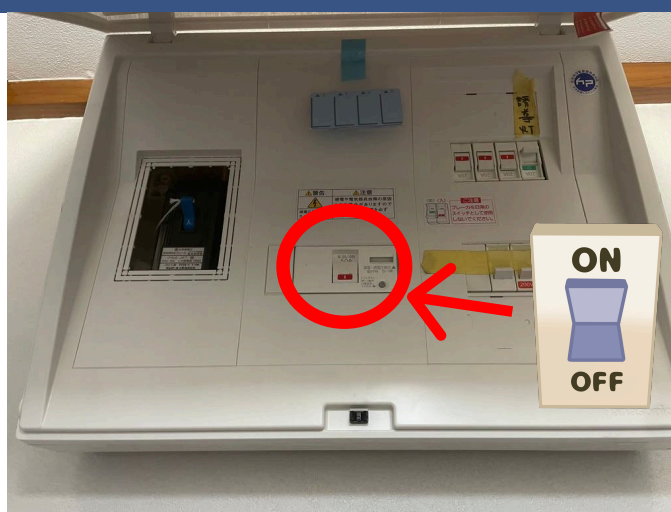
Please do not sit on the toilet.



## OTHERS



**Spare Toilet Paper**



**Breaker** (located directly above the toilet door)



If the breaker trips, please switch on the red circled section in the picture.



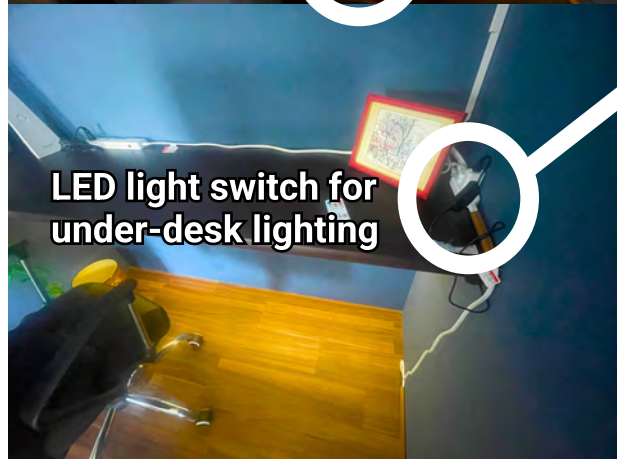
# 09 2ND FLOOR ILLUMINATION

## UNDER-BED LIGHT



Under-Bed Lights×3

## DESK AREA LIGHTING



- Ceiling Light
- Under-Desk Light
- Desk Light



# 09 2ND FLOOR HEATER

## LARGE HEATER

Feel free to use!



- 3-Level Switching
- 1200W
- Temperature Setting: 18° to 30°C
- Auto-Off Timer (10 Hours)



## SMALL HEATER

Feel free to use!

- 2-Second Quick Heating
- 3-Speed Airflow
- 1200W
- 90° Oscillation
- Equipped with Safety Device & Auto Shut-Off on Tip-Over



**Please be sure to turn it off when you leave!**



# 09 2ND FLOOR FOLDING BED

## HOW TO USE THE FOLDING BED

Feel free to use!



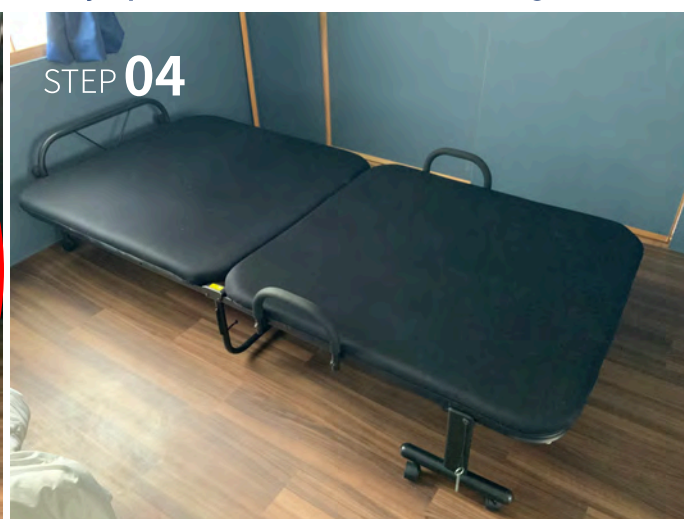
Both sides have hooks, so remove both.



After confirming that the hooks are removed, slowly open the bed to the left and right.



Hold the bed's legs and slightly spread the lower part first.



Confirm that it is fully opened.

There is a dedicated futon, so please use it when sleeping.





# 10 SURROUNDINGS STORES

小樽の隠れ家 神居'n  
Otaru Retreat Come Inn

## SUPER MARKET



### MAXVALU

BUSINESS HOURS

24 HOURS

TRAVEL TIME

Approx. 10 minutes by foot  
/ 3 minutes by car



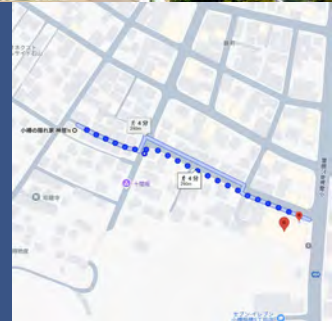
### RALSE MART

BUSINESS HOURS

9:00 - 21:00

TRAVEL TIME

Approx. 5 minutes by foot  
/ 2 minutes by car



## CONVENIENCE STORE AND DRUGSTORE



### 7-ELEVEN

BUSINESS HOURS

24 HOURS

TRAVEL TIME

Approx. 5 minutes by foot  
/ 2 minutes by car



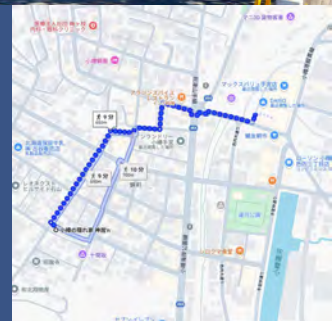
### TSURUHA DRUG & DAISO

BUSINESS HOURS

9:00 - 22:00 (TSURUHA DRUG)  
/ 9:00 - 20:00 (DAISO)

TRAVEL TIME

Approx. 10 minutes by foot  
/ 3 minutes by car





# 10 SURROUNDINGS RESTAURANT

小樽の隠れ家 神居'n  
Otaru Retreat Come Inn

## CHINESE RESTAURANT



### CHINESE RESTAURANT "KYOKA"

BUSINESS HOURS

11:30 - 19:30

CLOSED DAY

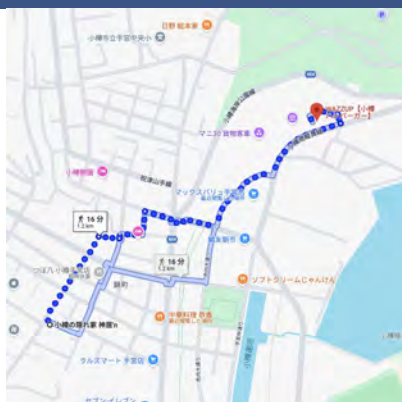
MONDAY

TRAVEL TIME

Approx. 5 minutes by foot



## HAMBURGER SHOP



### WAZZUP

BUSINESS HOURS

WEEKDAYS 11:00 - 17:00

SATURDAY, SUNDAY & PUBLIC HOLIDAYS 11:00 - 18:00

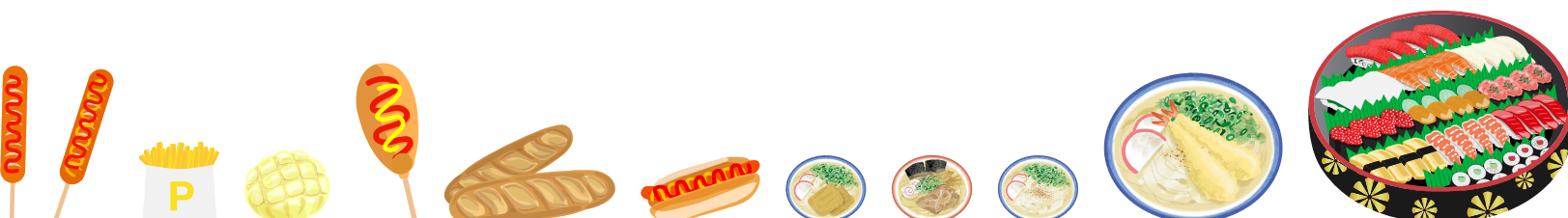
CLOSED DAY

TUESDAY

IF TUESDAY IS A PUBLIC HOLIDAY, WE REMAIN OPEN; THE FOLLOWING WEDNESDAY WILL BE OBSERVED AS A SUBSTITUTE HOLIDAY.

TRAVEL TIME

Approx. 15 minutes by foot / 5 minutes by car



# 10 SURROUNDINGS DELIVERY

## PIZZA HUT



In-store pickup is also available!

### Pizza Hut Otaru Store

BUSINESS HOURS

10:45 - 23:00

TRAVEL TIME

Approx. 15 minutes by foot  
/ 5 minutes by car



Download the App

## DEMAECAN



Here are some restaurants Accepting Orders!



Download the App

## UBER EATS



Here are some restaurants Accepting Orders!



Download the App



# 10 SURROUNDINGS TOURIST SPOT

小樽の隠れ家 神居'n  
Otaru Retreat Come Inn

## Otaru Museum

Approx. 15 minutes by foot  
/ 5 minutes by car



## Temiya Park

Approx. 15 minutes by foot  
/ 5 minutes by car



## Otaru Canal

Approx. 15 minutes by foot / 5 minutes by car



## Otaru Music Box Museum

Approx. 15 minutes by foot / 5 minutes by car



## Former Temiya Line Site

Approx. 15 minutes by foot  
/ 5 minutes by car



## Rinyu Morning Market

Approx. 15 minutes by foot  
/ 5 minutes by car



## Canal Park

Approx. 15 minutes by foot / 5 minutes by car



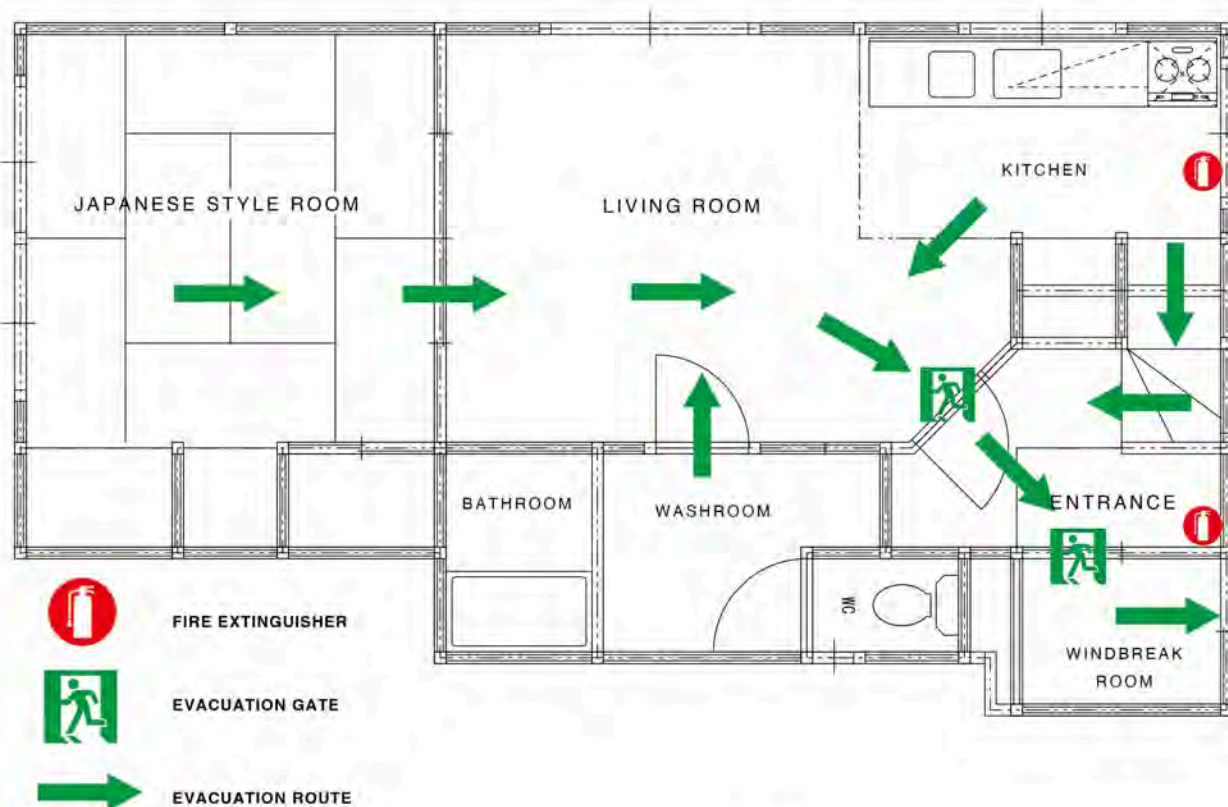
## Yunohana Onsen

Approx. 15 minutes by foot / 5 minutes by car

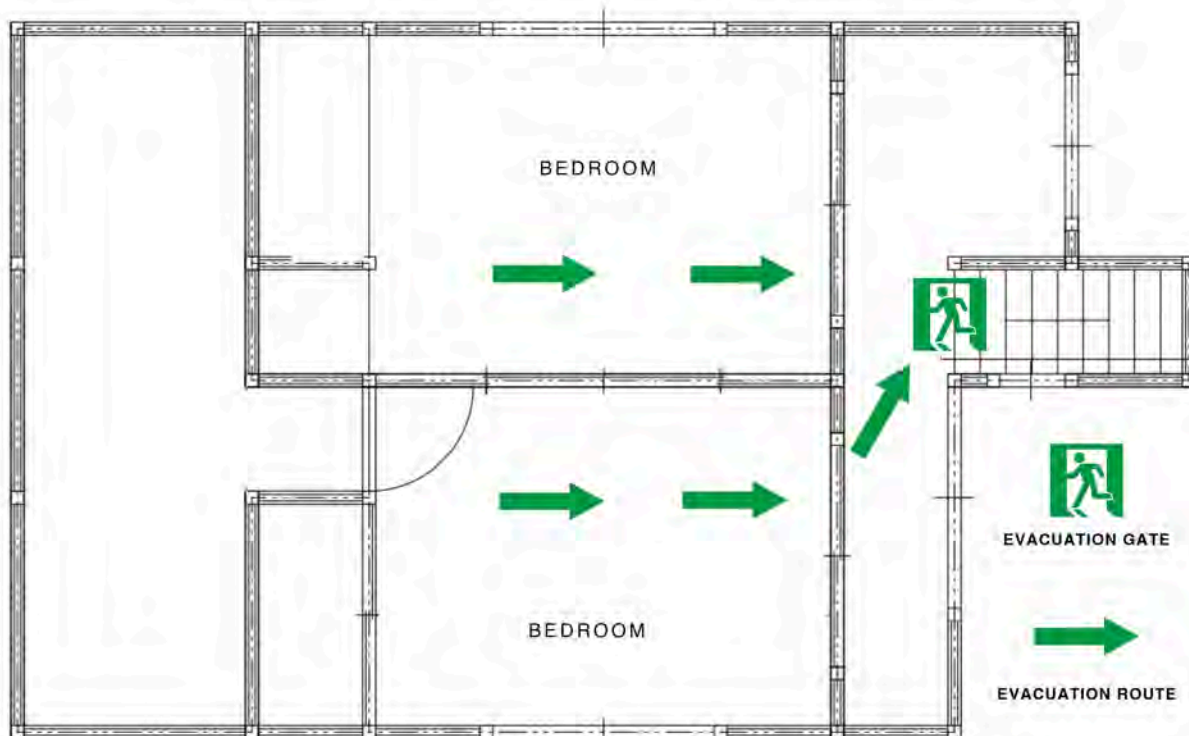




## FIRST FLOOR



## SECOND FLOOR





## FIRE EXTINGUISHER FOR INDUCTION COOKTOPS



Fire Extinguisher for Induction Cooktops



How to Use a Fire Extinguisher



step 1

Pull out (or remove) the safety pin.



step 2

Aim the nozzle at the base of the fire.



step 3

Squeeze the lever firmly.

## FIRE EXTINGUISHER FOR KEROSENE TANKS



Fire Extinguisher for Kerosene Tanks

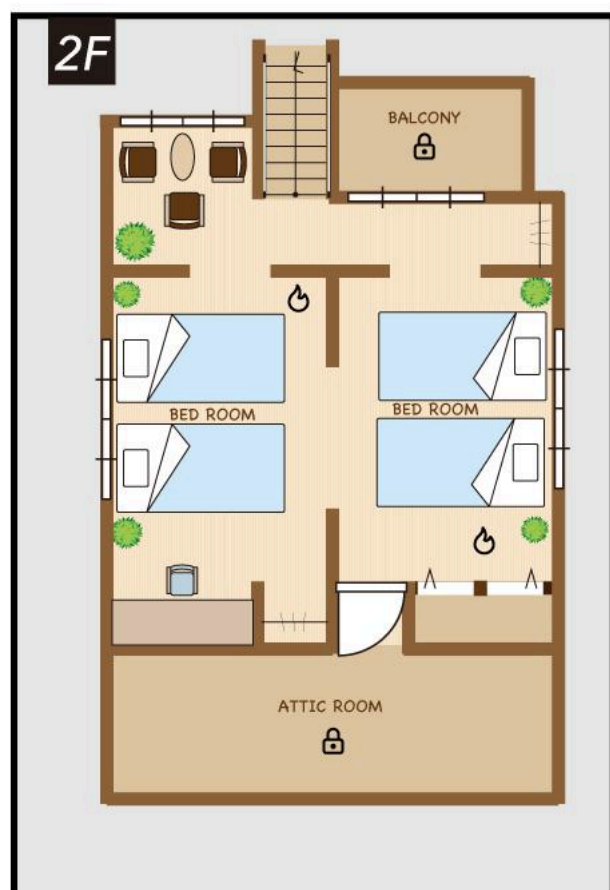
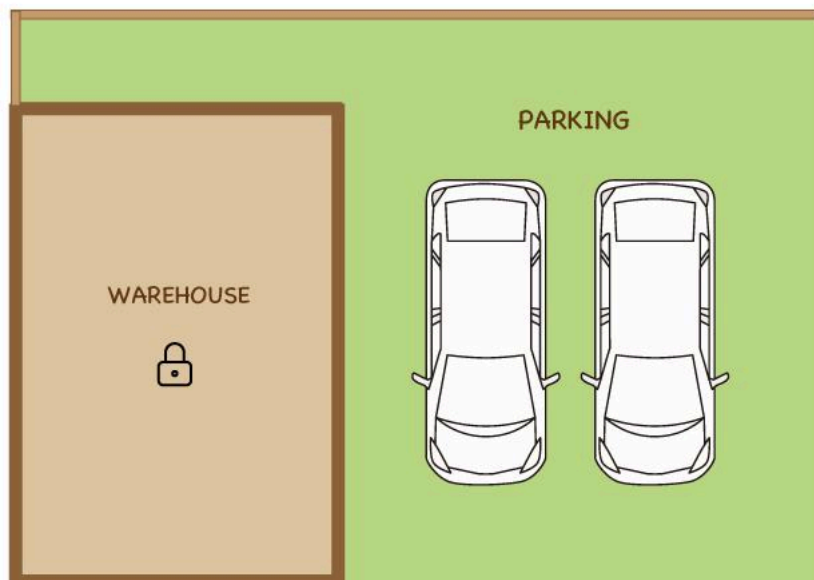
# 11

OTHERS

# FLOOR PLAN

小樽の隠れ家  
神居'n  
Otaru Retreat Come Inn

小樽の隠れ家  
神居'n  
Otaru Retreat Come Inn





## EMERGENCY CONTACTS

9:00 - 18:00

080-5582-8372

Outside of the above time slots

18:00 - 9:00

050-3310-1240

Emergency Key Code: 1791-3446-0

Please be sure  
to provide the  
emergency key  
code.

## EMERGENCY



- The house was broken into.
- Witnessed a hit-and-run.

POLICE

110



- The kitchen is on fire
- Black smoke is coming from the building next door.

FIRE DEPARTMENT

119



- My family member has collapsed and is unconscious.
- There's someone seriously injured in a traffic accident.

AMBULANCE

119

## OWNER CONTACT INFORMATION

E-mail

suguru.hagiwara@gmail.com

Phone

070-9032-2031